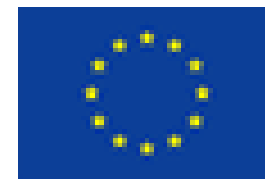




ISEN | école
d'ingénieurs



Future Opportunities for EDECT

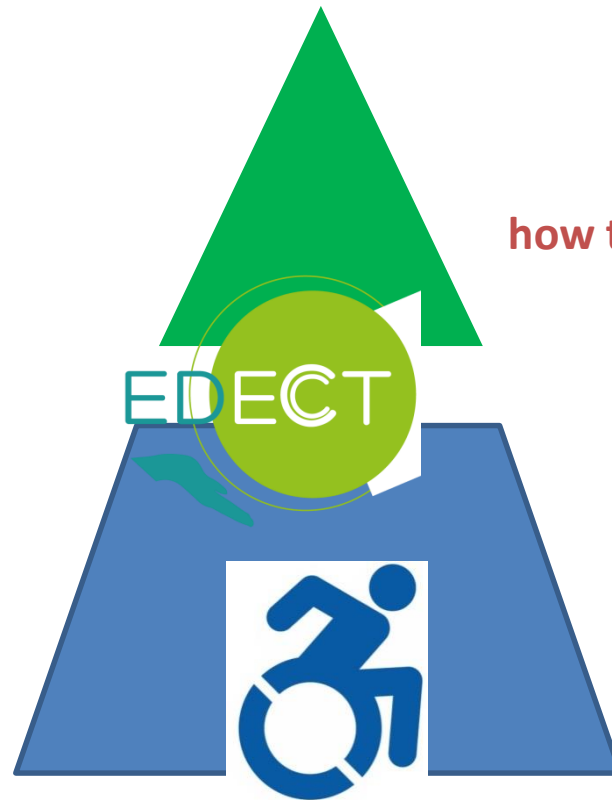
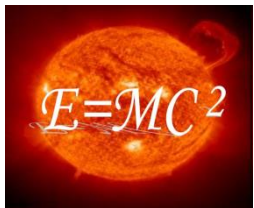
Annemarie Kokosy, ISEN-Lille, France

Pierre Boitte, Université Catholique de Lille, France

The EDECT idea

Quality of life of disabled people

Assistive Technology

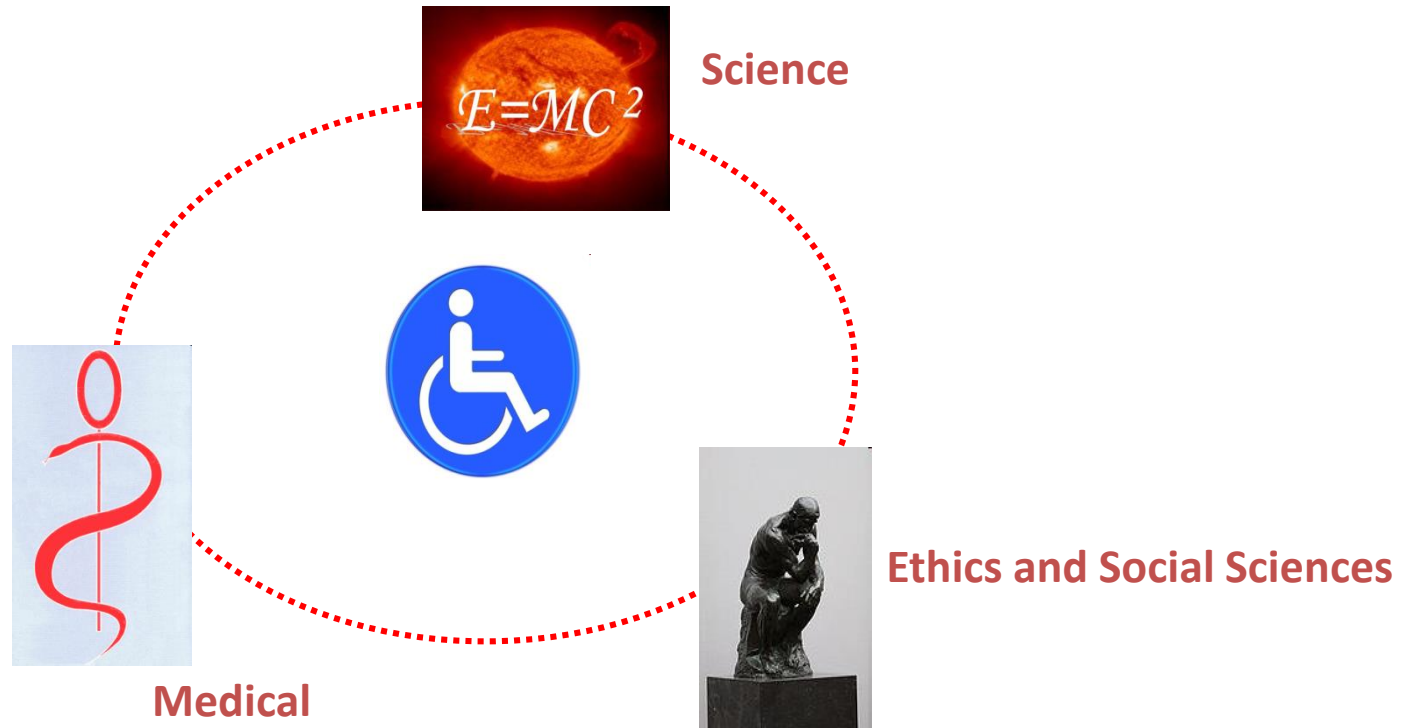


Ethical reflection on
 how the care givers delivered care

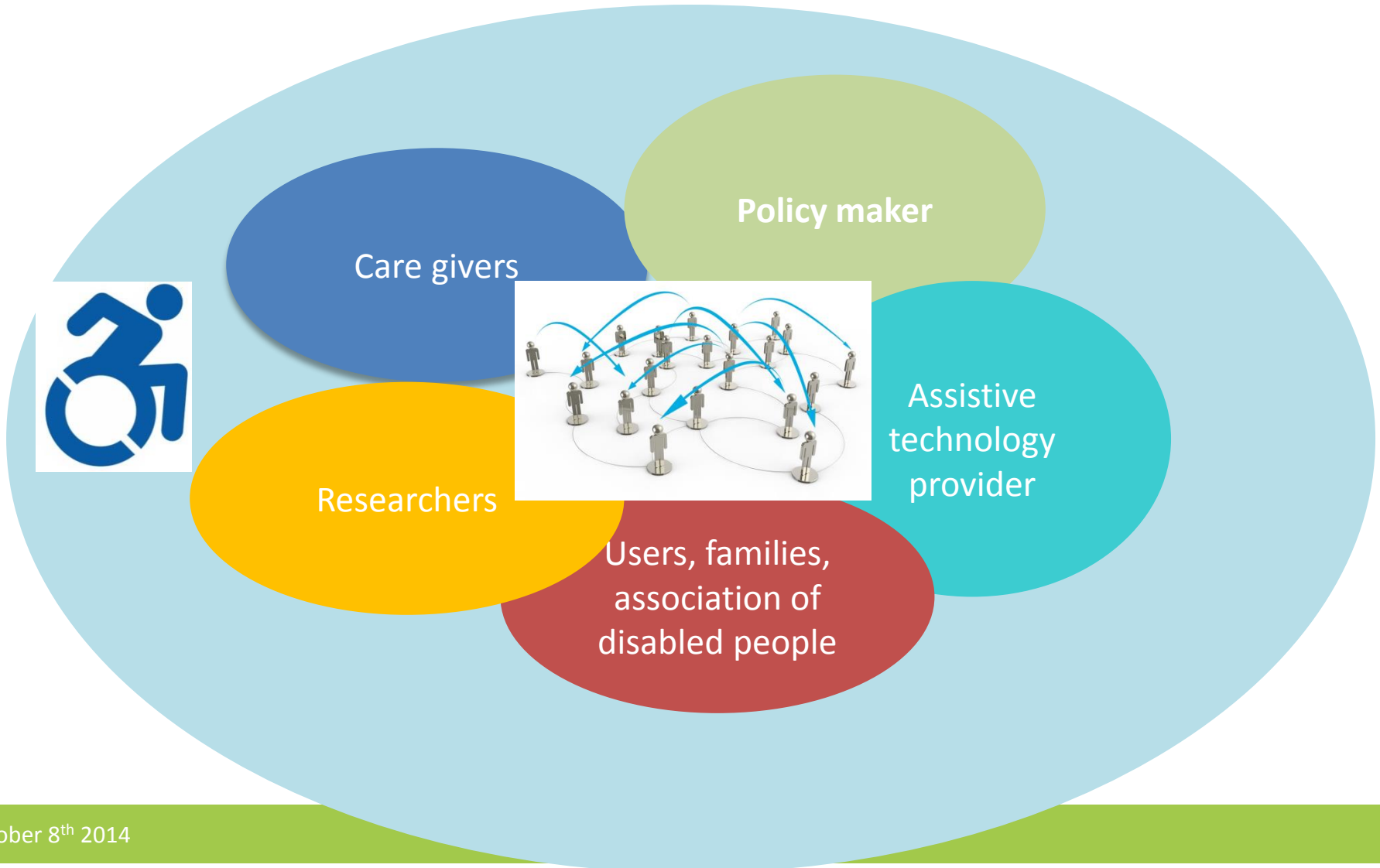


Previous strategy

- The user in the center of the development process

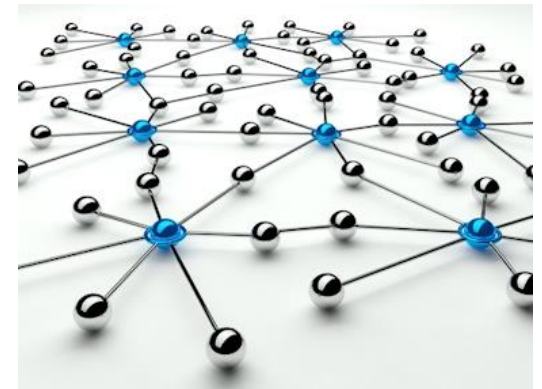


The EDECT strategy



Main challenges to co-create assistive technology

- Identify the more relevant stakeholders and rally them to contribute
 - ☞ **Create and develop the network**



Main challenges to co-create assistive technology

- Find the best way to involve the stakeholders from the beginning of the process

👉 **Create a methodology**



- Test, experiment and continuous feedback of the methodology

👉 **Create pilot sites**

Main challenges to co-create assistive technology

- Find the best way to measure the expected outcomes (improvement of quality of life, empowerment)

☞ **Identify the relevant criteria for proving the impact**



- Coach and train the stakeholders

☞ **Assistive technology 2.0 (reference to Health 2.0)**



Empowerment of disabled people



International Expert Evaluation Team





Intouchables, Eric Toledano, 2011